

Import Security (W5)

[This version is superseded. Click here to view the latest guide.](#)

PURPOSE

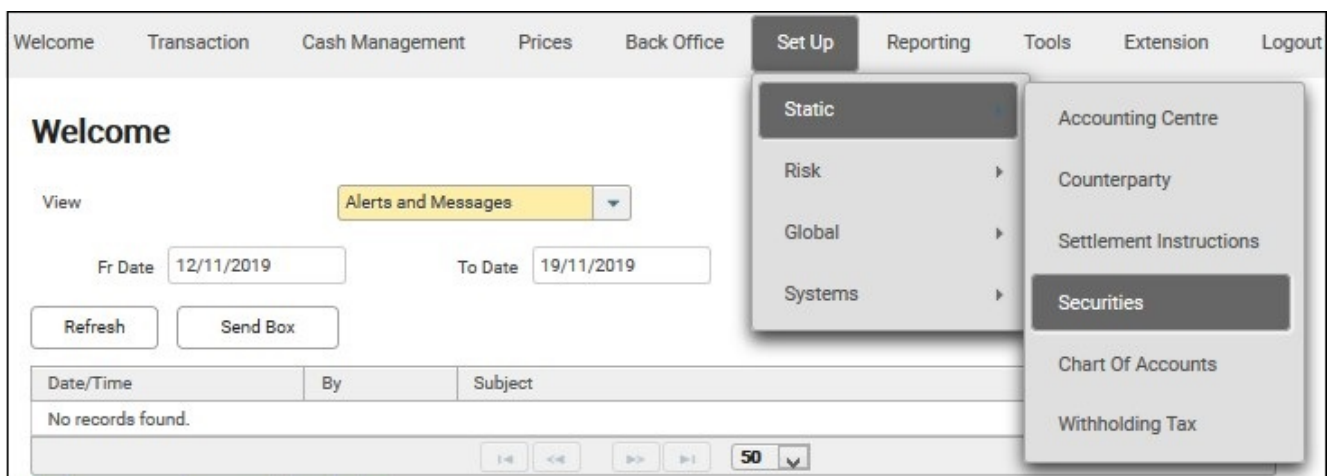
This document shows the procedure for importing securities into the system.

WHY IS THIS IMPORTANT?

This allows import of securities into the system and is a faster way to maintain in the system if there are many.

PROCEDURE

1. From the main menu, select Set Up > Static > Securities.



2. In the Security screen, click New. The screen below appears.

New Security

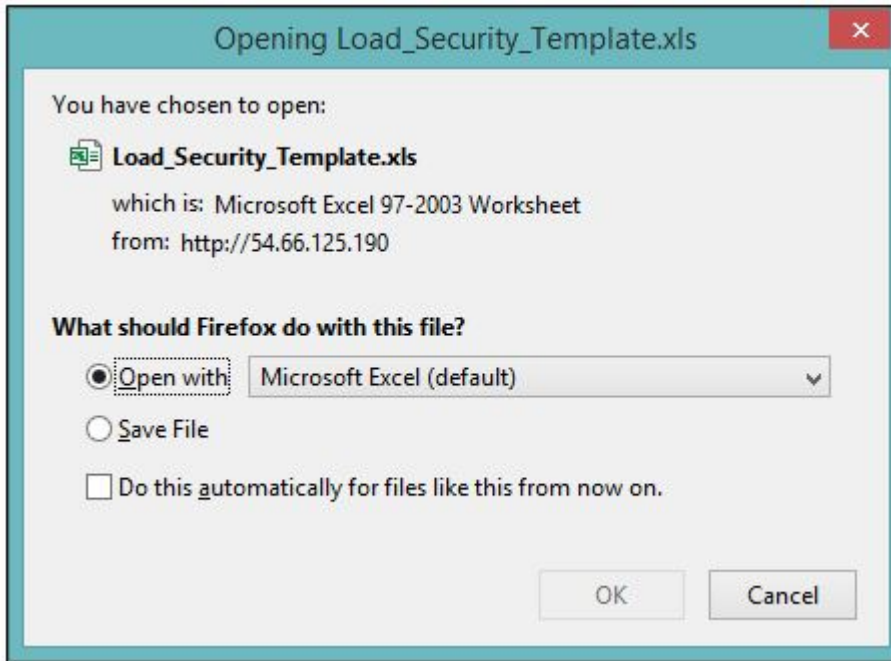
| | |
|-------------------|----------------------|
| Security Type* | <div></div> |
| Shortname* | <input type="text"/> |
| Security Sub Type | <div></div> |
| Full Name* | <input type="text"/> |
| Issuer | <input type="text"/> |
| Price Type* | <div></div> |
| Trade Ccy* | <div>SGD</div> |
| Holiday Ccy | <div>SGD</div> |
| Settlement T+* | <input type="text"/> |
| Comments | <div></div> |

3. Click the Import button. The screen below appears.

Import Security

| ID | Security Type* | Shortname* | Security Subtype | Full Name* | Issuer | Price Type* | Trade Ccy* | Holiday Ccy | Settlement T+* | Market Price Factor* | Comments | Basis* | Rate/Last Reset* | Freq* | Day Conv* | Settle Conv* | Issue Date* | First Coupon Date |
|-------------------|----------------|------------|------------------|------------|--------|-------------|------------|-------------|----------------|----------------------|----------|--------|------------------|-------|-----------|--------------|-------------|-------------------|
| No records found. | | | | | | | | | | | | | | | | | | |

4. Click Template to download the CS Lucas template for importing Security.



5. Save the file and open. An Excel sheet will be opened.

| | A | B | C | D | E | F | G | H | I | J | K | L | M | N | O | P |
|---|----------------|------------|-------------------|------------|--------|-------------|------------|-------------|----------------|----------------------|----------|--------|------------------|------------|-----------------|--------------|
| 1 | Security Type* | Shortname* | Security Sub Type | Full Name* | Issuer | Price Type* | Trade Ccy* | Holiday Ccy | Settlement T+* | Market Price Factor* | Comments | Basis* | Rate/Last Reset* | Frequency* | Day Convention* | Settle Conve |
| 2 | | | | | | | | | | | | | | | | |
| 3 | | | | | | | | | | | | | | | | |

6. Input values as required. Fields marked with an asterisk are mandatory. For more details on each field, see [Set Up Security](#).

| | A | B | C | D | E | F | G | H | I | J | K | L | M | N | O |
|---|----------------|-----------------------|-------------------|--|-----------------------------|-------------|------------|-------------|----------------|----------------------|----------|--------|------------------|-------------|----------------|
| 1 | Security Type* | Shortname* | Security Sub Type | Full Name* | Issuer | Price Type* | Trade Ccy* | Holiday Ccy | Settlement T+* | Market Price Factor* | Comments | Basis* | Rate/Last Reset* | Frequency* | Day Convention |
| 2 | Bond | MCT 3.6% 24/8/20 | Fixed Coupon | Mapletress Commercial Trust 3.6%4/8/2020 | Mapletress Commercial Trust | Percent | SGD | SGD | 2 | 0 | - | - | 3.6 | Semi-Annual | Next Business |
| 3 | Bond | Starhub 3.08% 12/9/22 | Fixed Coupon | Starhub Ltd 3.08% 12/9/2022 | Starhub Ltd | Percent | SGD | SGD | 2 | 0 | - | - | 3.08 | Semi-Annual | Next Business |
| 4 | Bond | SIA 3.22% 9/7/20 | Fixed Coupon | Singapore Airlines Ltd 3.22% 9/7/2020 | Singapore Airlines Ltd | Percent | SGD | SGD | 2 | 0 | - | - | 3.22 | Semi-Annual | Next Business |
| 5 | Equity | A-RET | Shares | Ascendas Real Estate Inv Trust | | Price | SGD | SGD | 2 | 1 | - | - | 0 | Annual | Next Business |

7. Go back to the Security screen. Tick on the Read File box.

Import Security

←
Template
Read File ☒

File

Read File
Browse...

| ID | Security Type* | Shortname* | Set |
|-------------------|----------------|------------|-----|
| No records found. | | | |

8. Click Choose File. Look for the saved Load_Security_Template.xls file.

9. Click Read File. The values inputted in the Excel file will appear.

| Import Security | | | | | | | | | |
|--|----------------|-----------------------|------------------|--|----------------------------|-------------|------------|-------------|----------------|
| <div> ← Load Template Read File </div> | | | | | | | | | |
| ID | Security Type* | Shortname* | Security Subtype | Full Name* | Issuer | Price Type* | Trade Ccy* | Holiday Ccy | Settlement T+* |
| 1 | Bond | MCT 3.6% 24/8/20 | Fixed Coupon | Mapletress Commercial Trust 3.6%4/8/2020 | Mapletree Commercial Trust | Percent | SGD | SGD | 2 |
| 2 | Bond | Starhub 3.08% 12/9/22 | Fixed Coupon | Starhub Ltd 3.08% 12/9/2022 | Starhub Ltd | Percent | SGD | SGD | 2 |
| 3 | Bond | SIA 3.22% 9/7/20 | Fixed Coupon | Singapore Airlines Ltd 3.22% 9/7/2020 | Singapore Airlines Ltd | Percent | SGD | SGD | 2 |
| 4 | Equity | A-RIET | Shares | Ascendas Real Estate Inv Trust | | Price | SGD | SGD | 2 |

10. If there is an error, the user will be prompted with the rows to be corrected. To make corrections, go to the template to edit and upload again.

11. If there is no error, click Load.

12. You will see the message below once successfully loaded.

The Security has been successfully loaded.

13. Click Back Button to return to the Security screen.

14. Filter Security by type in the Security screen. Click Refresh.

Security

Security Type*
Shortname
List Exclude Inactive

Refresh
Approve
Group
Download
Star
Save

App?
Equity
Bond
Securitized
Money Market Fund

Fullname
Status

No records found

50

15. Approve the newly created securities by selecting the checkbox and click Approve.

Security

Security Type*
Bond
Shortname

Refresh
New
Delete
Approve

| | App? ↕ | Security Type ↕ | Shortname ↕ |
|-------------------------------------|--------|-----------------|-------------------------------------|
| <input checked="" type="checkbox"/> | N | Bond | MCT 3.6% 24/8/20 |
| <input checked="" type="checkbox"/> | N | Bond | SIA 3.22% 9/7/20 |
| <input checked="" type="checkbox"/> | N | Bond | Starhub 3.08% 12/9/ |

FREQUENTLY ASKED QUESTIONS

RELATED INFORMATION

[Set Up Security](#)

CHANGE HISTORY

| Date | By | Changes |
|--------------|-------|--|
| 15-Feb-2008 | - | Created |
| 11-July-2017 | Bella | Reformatted. Rewritten. |
| 20-Aug-2018 | Silpa | Updated step 1 and screenshot. |
| 7-Dec-2018 | TS | Updated screen shots in step 3, 5 and 6. |
| 19-Nov-2019 | Lyra | Updated Screenshots. |